



Flat Bottom Silos



Plastic/Woodchip Storage Silos



Splayed Leg Silos



Loadout Silos



Hopper Bottom Silos



Grain Walling



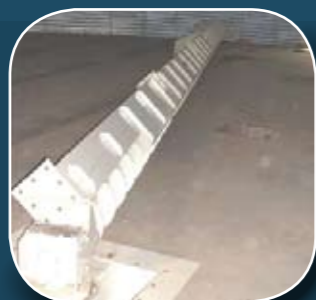
Apache Hoppers



Smooth Wall Silos



Grain Tunnels



Sweep Augers



Dischargers



Aeration Laterals



Catwalks



Square Hoppers



Aeration Fans

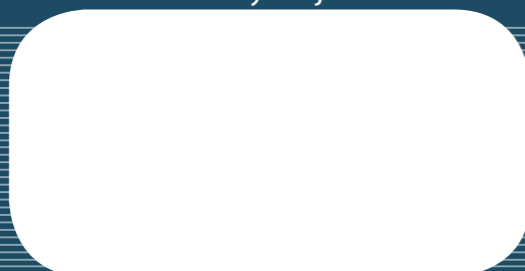


Flat Roof Silos



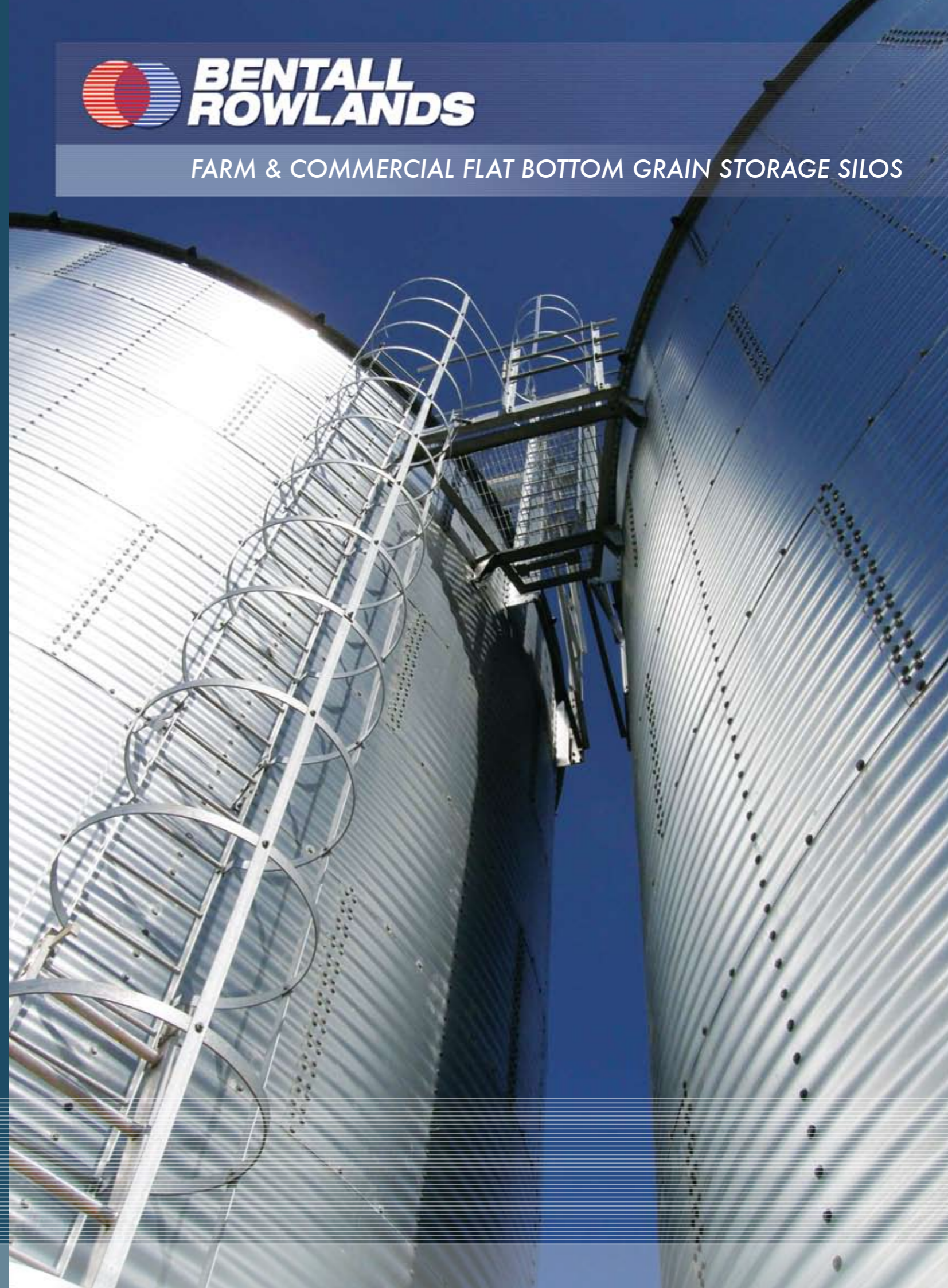
Turnkey Project

Tel: +44(0)1724 282 828
Fax: +44(0)1724 280 021
sales@bentallrowlands.co.uk
www.bentallrowlands.co.uk



**BENTALL
ROWLANDS**

FARM & COMMERCIAL FLAT BOTTOM GRAIN STORAGE SILOS



FARM AND COMMERCIAL FLAT BOTTOM GRAIN STORAGE SILOS

Bentall Rowlands Storage Systems designs, manufactures, delivers and installs all your storage needs. Our in house design and onsite manufacturing enables us to cope with your non standard requirements as well as the very comprehensive range of standard equipment that is produced in our facility in Scunthorpe, England.

The design of Bentall Rowlands hopper silos is based upon the loads and pressures derived from the German DIN 1055 1987 standard. Structural calculation based upon BS 5950 part 5 and wind loading of 50m/sec (180m/h) for a probability period of 25 years.



Eaves Inspection Hatch
Standard with all of our silos; the eaves inspection hatch comes complete with hinged lid, rubber sealant and mesh grill. We also offer an optional safety handrail assembly.



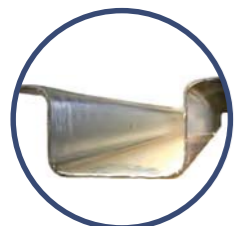
Temperature Monitoring
To safeguard your grain an optional temperature monitoring system can also be supplied with the silo. These systems are state of the art and can be monitored by either a simple handheld unit or a fully computerized system.



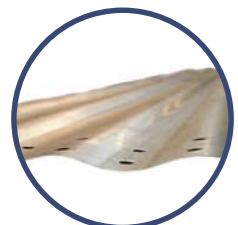
Access Ladders
All our ladders use wide, smooth, circular steel rungs with safety cage and are fully galvanized.



Fixings
Silo fixings are generally spun galvanised to ensure a long life. We also use a 25 mm OD neoprene backed washer for the perfect seal.



Sidewall Stiffeners
Strong upright stiffener column carry the vertical load of the bin to the foundation. Manufactured from high strength steel, stiffeners have a wide flange profile which allows them to carry a greater load than other designs.



Sidewall Sheets
Wall sheets are corrugated, utilizing shallow pitch corrugation to ease material flow and manufactured from pre-galvanized G600 steel sheet with minimum total coating of 600 grams per square meter.



Scaffold Door
To provide greater access to the silo we can design and supply a scaffold door assembly which can be installed in the bottom ring of the silo.

Bentall Rowlands standard silo range - Volumes based on 25 degree roof fill, no allowances for compaction made.

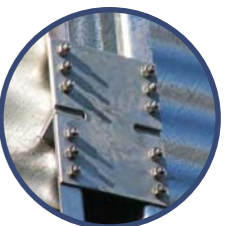
No of Rings	Wall Height	Diameter																											
		4.00	5.00	6.00	7.00	8.00	9.00	10.00	11.00	12.00	13.00	14.00	15.00	16.00	17.00	18.00	19.00	20.00	21.00	22.00	23.00	24.00	25.00	26.00	27.00				
4	4.74	64	101	147	203	270	346	433	532	642	763	897	1,044	1,203	1,376	1,562	1,762	1,977	2,207	2,451	2,712	2,988	3,280	3,589	3,914				
5	5.93	78	124	181	249	329	421	526	644	776	920	1,079	1,253	1,441	1,645	1,863	2,098	2,349	2,617	2,902	3,204	3,524	3,861	4,218	4,593				
6	7.11	93	147	214	295	389	497	619	757	910	1,078	1,262	1,462	1,679	1,914	2,165	2,434	2,722	3,027	3,352	3,696	4,060	4,443	4,847	5,271				
7	8.30	108	171	248	340	448	572	713	870	1,044	1,235	1,444	1,672	1,918	2,182	2,467	2,770	3,094	3,438	3,803	4,188	4,596	5,025	5,476	5,950				
8	9.48	123	194	281	386	508	648	806	982	1,178	1,392	1,627	1,881	2,156	2,451	2,768	3,106	3,466	3,848	4,253	4,681	5,132	5,606	6,105	6,628				
9	10.67	138	217	315	431	567	723	899	1,095	1,312	1,550	1,809	2,091	2,394	2,720	3,070	3,442	3,838	4,259	4,704	5,173	5,668	6,188	6,734	7,307				
10	11.85		240	348	477	627	798	992	1,207	1,446	1,707	1,992	2,300	2,632	2,989	3,371	3,778	4,211	4,669	5,154	5,665	6,204	6,770	7,363	7,985				
11	13.04		264	382	523	686	874	1,085	1,320	1,580	1,864	2,174	2,509	2,871	3,258	3,673	4,114	4,583	5,080	5,604	6,158	6,740	7,351	7,993	8,664				
12	14.22			415	568	746	949	1,178	1,433	1,714	2,021	2,356	2,719	3,109	3,527	3,974	4,450	4,955	5,490	6,055	6,650	7,276	7,933	8,622	9,342				
13	15.41			449	614	806	1,025	1,271	1,545	1,848	2,179	2,539	2,928	3,347	3,796	4,276	4,786	5,328	5,900	6,505	7,142	7,812	8,515	9,251	10,021				
14	16.59				659	865	1,100	1,364	1,658	1,982	2,336	2,721	3,138	3,585	4,065	4,577	5,122	5,700	6,311	6,956	7,636	8,348	9,096	9,880	10,699				
15	17.78				705	925	1,175	1,457	1,770	2,116	2,493	2,904	3,347	3,824	4,334	4,879	5,458	6,072	6,721	7,406	8,127	8,884	9,678	10,509	11,378				
16	18.96					984	1,251	1,550	1,883	2,250	2,651	3,086	3,556	4,062	4,603	5,180	5,794	6,444	7,132	7,857	8,619	9,420	10,260	11,138	12,056				
17	20.15						1,044	1,326	1,643	1,996	2,384	2,808	3,268	3,766	4,300	4,872	5,482	6,130	6,817	7,542	8,307	9,112	9,956	10,841	11,767	12,734			
18	21.33							1,401	1,736	2,108	2,518	2,965	3,451	3,975	4,538	5,141	5,783	6,466	7,189	7,953	8,758	9,604	10,492	11,423	12,397	13,413			
19	22.52								1,477	1,829	2,221	2,652	3,122	3,633	4,185	4,777	5,410	6,085	6,802	7,561	8,363	9,208	10,096	11,029	12,005	13,026	14,091		
20	23.70									1,922	2,333	2,786	3,280	3,816	4,394	5,015	5,679	6,387	7,138	7,933	8,773	9,659	10,589	11,565	12,587	13,655	14,770		
21	24.89									2,015	2,446	2,920	3,437	3,998	4,603	5,253	5,948	6,688	7,474	8,306	9,184	10,109	11,081	12,101	13,168	14,284	15,448		
22	26.07										2,559	3,054	3,594	4,180	4,813	5,491	6,217	6,990	7,810	8,678	9,594	10,559	11,573	12,637	13,750	14,913	16,127		
23	27.26											2,671	3,188	3,752	4,363	5,022	5,730	6,486	7,291	8,146	9,050	10,005	11,010	12,066	13,173	14,332	15,542	16,805	
24	28.44												3,322	3,909	4,545	5,232	5,968	6,755	7,593	8,482	9,422	10,415	11,460	12,558	13,709	14,913	16,171	17,484	
25	29.63													3,456	4,066	4,728	5,441	6,206	7,024	7,894	8,818	9,795	10,826	11,911	13,050	14,245	15,495	16,800	18,162
Roof Height		1.2	1.46	1.75	2.06	2.35	2.51	2.8	3.09	3.38	3.67	3.96	4.25	4.54	4.82	5.11	5.4	5.69	5.98	6.27	6.56	6.85	7.14	7.42	7.72				



Silo Roof
Our silos feature an exceptionally strong roof structure. Silos up to and including the 9 metre diameter are fitted with a standard, single span roof structure, while on the larger silos, 10 metre diameter and above, feature galvanised rafter system spanning from eaves to peak.



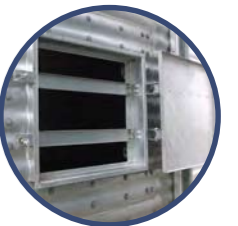
Stiffener Joint
The Bentall Rowlands stiffeners are joined by using a horizontal plate to transfer the axial loading stiffener to stiffener guaranteeing even load distribution. This design does not rely on edge to edge contact or bolt shear to transfer loads.



Access Platforms
Our platforms are designed to meet your individual access needs. We can design and manufacture single bin access platforms or shared bin access platforms, are manufactured from galvanised materials with tubular handrails.



Sidewall Access Hatch
The tight sealing, reinforced inner door panel swings easily out of the way when open, and is securely held in place when closed by a pair of wedge-lock door handles.



Anchor Points
All bottom stiffeners and base plates are hot dipped galvanised to ensure long life. Chemical fix or cast-in anchor bolts are also available as an option.



Roof Vents
The Bentall Rowlands roof vents are triangular in design. This design allows high airflow when filling/discharging or aerating the silo but also ensures that foreign objects such as rain, snow, birds etc cannot enter.



Roof Cap
Whether your fill rate is large or small we can accommodate it with our range of roof cap sizes. These can vary from 600mm to over 1000mm depending on your requirements.

